



NEHRU GRAM BHARATI

(Deemed to be University)

Kotwa-Jamunipur-Dubawal, Prayagraj, U.P. (India)

U/S-3 OF UGC ACT, 1956



Marching ahead with
confidence

Information Brochure
= **2023-24** =



Contents

- About Nehru Gram Bharati (Deemed to be University)
- Vision & Mission
- From the Chancellor's Desk
- From the Vice-Chancellor's Desk
- From the Pro-Vice-Chancellor's Desk
- NGB (DU) at a Glance
- NEP 2020 (National Education Policy - 2020)
- Facilities
- Glimpses
- Media Coverage
- Convocation - 2023
- Academic Programme
- Instruction for Filling Application Form
- Officers to Contact
- Code of Conduct (आचार संहिता) for Students
- Admission Policy



“शहर चला गाँव के पथ पर,
नेहरू ग्राम भारती परिवार विकास के रथ पर”



ABOUT NEHRU GRAM BHARATI

(Deemed to be University)

Nehru Gram Bharati (Deemed to be University), came into existence as the first rural university in the state of Uttar Pradesh, and one of a few rural areas based institution of higher learning in India. It enjoys recognition as a 'Deemed to be University, accorded by the Union Ministry of Human Resource Development U/S 3 of UGC Act, 1956 vide Notification No. F.9-42/2005-43 (A), dated June 27, 2008. Nehru believed that role of education and social contribution was especially important for the development of land hinter.

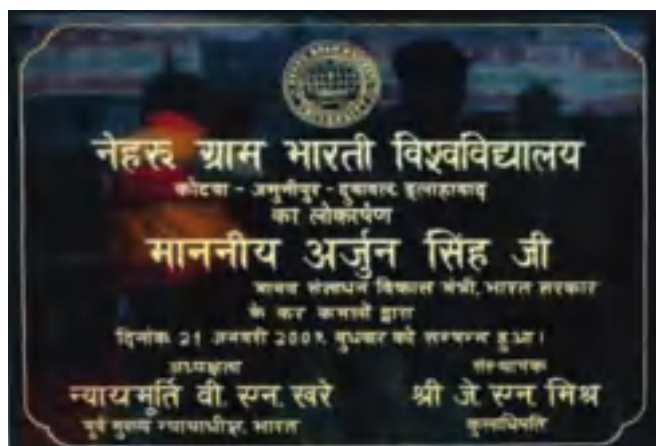
Pandit Nehru's dream of having institutions of higher learning in the villages, particularly for rural population was transformed into reality in 2008 by Sri J. N. Misra, a former bureaucrat turned social thinker and philanthropist. It was Sri J. N. Misra's unflinching belief in the ideals of Gandhi and Nehru and his vision and dedication for uplifting the rural masses through quality higher education, that led to the establishment of Nehru Gram Bharati (Deemed to be University) Prayagraj in 2008.

NGB (DU) is located in a rural area in co-existence with natural environment. It aims at empowering the faith of Prayagraj and nearby districts with Vocational and Skill development Training, besides the facility of Self Employment.

The University is committed towards improving the enrollment ratio of the poor meritorious and female category of students in higher education. Our attempt aims at preparing the students for their holistic personality development through inculcating leadership quality, responsibility and sense of devotion to the society and the country.



Late Pt. Jawahar Lal Nehru laying the foundation stone of Nehru Gram Bharati on 26th July, 1962



“समय और शिक्षा का सही उपयोग ही व्यक्ति को सफल बनाता है।”

OUR VISION & MISSION



Nehru Gram Bharati (Deemed to be University), Kotwa- Jamunipur- Dubawal, Prayagraj believes in the words of Nehru ji that "University stands for humanism, tolerance, reason, the adventure of ideas and for the search of truth."

Vision:

We aim to nurture and promote youth especially from rural area by providing high quality education and training in keeping with the promise of Late Pt. Jawahar Lal Nehru. Our dream is to build a role model institution with state of art infrastructure providing right ambience for creativity & stimulation in thinking to generate new ideas for research and application of skill for developing technology for welfare of mankind.

Mission:

Our mission is to empower the nation through preparation of competent and trained human resource. University has plans to enhance capability of young talents for fulfilment of their aspirations through innovation, skill development and proper training. We endeavour to enhance employability through training and spirit of competitiveness. We emphasize inculcating initiative for entrepreneurship generating self-employment and national wealth.

The University upholds and strives to achieve the following:

- Provide education to the masses staying in remote areas.
- Provide specialized job oriented courses to people living in village and small towns & cities of the country.
- Integrate and upgrade ruralites with urbanite students by providing world class educational facilities.
- Restrict the flow of student population from rural to urban centres of education.
- Emphasize on job oriented courses.
- Women empowerment and self-dependency through education.
- Initiate transformative changes in the prevalent education system by catering to the needs of new vocations being created increasingly by explosions in the area of science and technology and to adopt a system in education which would promote and stress on "Learning by Doing" inculcated through extension of education.
- Impart free education to the poor, helpless, divyangjan and deprived students.
- Integration of rural community with the world through education.
- Give effect to the spirit of national and international goodwill, friendship and partnership, as well as the desires of the people of other areas and countries to share their best with each other for the overall sustainability of human life on planet earth.
- Organize short term training programmes for farmers, block and district level officials concerned with agriculture and rural development.
- The university keeps the students informed about potential job opportunities and assists them in making prudent decisions in their career choices.
- Impart leadership qualities and social responsibilities through education.



FROM THE CHANCELLOR'S DESK

J.N. MISRA
CHANCELLOR

Nehru Gram Bharati (Deemed to be University)
Kotwa-Jamunipur-Dubawal
Prayagraj (U.P.)

Nehru Gram Bharati (Deemed to be University) has proudly completed 15 years of its existence. This defining period has been marked by veneration and adulations on one hand and challenges and obstacles on the other. We have accepted the veneration and adulations in all humility and faced the challenges and obstacles with courage and determination.

We are grateful for the sincere support of all our stakeholders particularly staff & students of the university, for their devotion, dedication & Co-operation in all respects.

May we extend a hearty welcome to the new comers and appeal to them to devote themselves fully for an all-round development of their personality enabling them to serve the society and the country.

Our University is fully active in the implementation of the national education policy. We are trying for new courses like medical, agriculture science etc. Soon these will be done.

Best wishes to all....!!!

FROM THE VICE CHANCELLOR



SANJAY KUMAR SRIVASTAVA

VICE CHANCELLOR

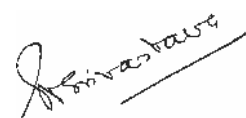
**Nehru Gram Bharati (Deemed to be University)
Kotwa-Jamunipur-Dubawal
Prayagraj (U.P.)**

हर्ष का विषय है कि पूर्व की भांति सत्र 2023-24 के आरम्भ में नेहरू ग्राम भारती मानित विश्वविद्यालय प्रवेश विवरणिका मुद्रित एवं प्रकाशित कर रहा है। विश्वविद्यालय में प्रवेश लेने के इच्छुक छात्रों में विश्वविद्यालय के पाठ्यक्रमों, प्रवेश हेतु न्यूनतम अर्हता, सम्बन्धित पाठ्यक्रम के शुल्क व विश्वविद्यालय की सुविधाएँ, उपलब्धियों व अन्य सूचनाओं को जानने की इच्छा रहती है। विवरणिका के माध्यम से उन्हें एकल पटल से नेहरू ग्राम भारती मानित विश्वविद्यालय से सम्बन्धित समस्त छात्रोपयोगी सूचनायें प्राप्त होंगी, ऐसा मेरा विश्वास है।

यह विवरणिका प्रवेशार्थियों को प्रवेश प्रक्रिया की जानकारी देगी एवं उनके संज्ञान में लाया जायेगा कि किन पाठ्यक्रमों में प्रवेश परीक्षा के माध्यम से और किन पाठ्यक्रमों में मेरिट आधारित प्रवेश होंगे। उपलब्ध विषयों की सूचना से उन्हें अपने इच्छित विषय चयन करने में सुविधा होगी। प्रस्तुत विवरणिका में प्रवेशार्थियों की जानकारी के लिये शुल्क, छात्रवृत्ति, यातायात सुविधा, छात्रावास, जलपानगृह, क्रीड़ा सुविधाओं, एन.एस.एस., रोवर – रेन्जर, एन.सी.सी. आदि कार्यकलापों का विवरण भी उपलब्ध है।

नयी शिक्षा नीति-2020 को प्रभावी ढंग से अंगीकृत करने हेतु नेहरू ग्राम भारती मानित विश्वविद्यालय प्रतिबद्ध है। संस्था के उपलब्ध अल्पावधि डिप्लोमा पाठ्यक्रमों जैसे ज्योतिष कर्मकांड एवं वास्तुशास्त्रा, श्री गंगा रक्षक, श्री गंगा सेवक, टैली, योग आदि के बारे में प्रवेशार्थी इस विवरणिका के माध्यम से जानकारी प्राप्त कर सकेंगे।

शोध छात्रों का प्रवेश क्रेट परीक्षा के माध्यम से होता है। इसका उल्लेख इस विवरणिका में उपलब्ध है। छात्र हित की बनाई गयी समितियों की जानकारी भी इस विवरणिका से प्राप्त की जा सकती है। मुझे आशा ही नहीं पूर्ण विश्वास है कि विवरणिका नये प्रवेशार्थियों एवं उनके अभिभावकों के लिये उपयोगी सिद्ध होगी और उनकी जीवनयात्रा को एक निश्चित दिशा देने में समर्थ होगी।





FROM THE PRO VICE CHANCELLOR'S DESK

DR. S.C. TIWARI

PRO-VICE CHANCELLOR

**Nehru Gram Bharati (Deemed to be University)
Kotwa-Jamunipur-Dubawal
Prayagraj (U.P.)**

It is with great pride and gratitude that NGB (DU) is publishing its brochure for the session 2023-24. With the blessings of our Chancellor and dedication of our Secretary the deemed University is proceeding in directions as envisaged in NEP 2020. Our aim is to bring out sustainable development and transform the rural India into a vibrant knowledge society and global real knowledge superpower by making higher education more holistic, flexible and multi disciplinary. We are committed to bring quality, equity, affordability and accountability in our University. NGB (DU) has established a Research Center at Shashi Campus (Joothi Tali) where research in various discipline such as Humanities, Social Sciences, Life Sciences and Natural Sciences beneficial to rural masses is carried out and example of such an endeavour is department of Zoology and Botany developing their own Vermi Compost Biofertilizer which is very popular among local farmers.

The University has good collection of Herbal Plants. The University has facility of NCC, NSS and Rover Rangers to develop National instincts among students. The students of our University have achieved medals in the Intervarsity competitions and 'Khelo India' programs. Lastly, my sincere thanks to the members of the Brochure Committee for its publication in time.

[Handwritten signature]



NGB (DU)

AT A GLANCE

1. Teaching-Learning and Research :

- Blended mode of teaching, learning and evaluation.
- CBCS/elective course system.
- Research Centre, Hostel, Conference Hall, Media Centre, Smart and ICT enabled classrooms, Cafeteria, Sports Complex, Gym, Medical facility with 24X7 Ambulance facility, Green Audited Campuses, Herbal Garden, Girls Common Room.
- Placement Cell.
- 6 Faculties with 26 departments spread across 5 campuses.
- Wi-Fi enabled campuses encompassing all modern facilities for fostering academic driven eco- system.

2. Library:

- Library spread across 5 campuses with covered area 2500 sq.mtr. having approximately 50000 books and 17000 titles.
- E-Library, with remote access facility
- Subscribed to DELNET, a network of more than 467 institutional libraries for students and researchers
- Reprographic facilities at all libraries
- Reading room for 100 students.
- OPAC supported Library Management Software (SOUL 3.0)

3. Innovation & Incubation Centre:

- Fostering eco-system for Innovation, research and development.
- System for funding of projects with special focus on rural attributions.
- Incubation Centre with space for managing more than 50 participants.
- Interactive panels for project presentation

4. Media Centre:

- Modern Media Centre well equipped with latest multimedia equipment, Acoustic studio.
- Plans underway for starting NGB (DU) community radio broadcast.
- Lecture capturing and recording system for e-content development.



5. Research Centre:

Located at Shashi Parisar with Labs, Conference Hall, Auditorium, animal house, and Centre for Fish Culture and Training, Vermicomposting unit etc.

- Central Instrumentation Facility with range of sophisticated scientific equipment/instruments
- Vibrant research environment represented by Patents/IPR, and MOUs with multiple universities including international institutions and corporate bodies and NGOs.

6. Herbal Garden and Green House in Jamunipur Campus

7. Facility for Divyangjan:

Facilities and Support for Divyangjan

- University's campuses are disabled friendly having provisions for smooth accessibility and has facilities such as ramps and rails along with other necessary changes as per their requirements.
- Tricycles and wheel chairs are provided in each building so that, they can move around the campus safely and freely.
- Separate accessible toilets/washrooms are available in most of the buildings for students with disabilities.
- Central library offering separate space for the benefit of Divyang students and for the benefit of the visually challenged students a few computers in the Central Library are equipped with necessary software and hardware, so as to ensure that the visually challenged can access e-resources and enhance their knowledge.
- Celebration of important days pertaining to disability such as the World Disability Day, White Cane Day, etc. in order to create awareness about the capabilities of Divyangjan.
- A dedicated Unit named Equal Opportunity Cell and Committee for Divyangjan Welfare holds various events to encourage students and increase awareness about issues relevant to the cause of Divyangjan.

Future plans

- Develop a dynamic website exclusively for the Divyang students and employees, so that they can access all the necessary information on their desktop/laptops and mobile phones.
- To provide a Mobility Van (Electric Rickshaw) for the Divyang students and employees to move around the campus without any hurdles.
- Conduct short terms courses on language skills, computer skills, communication skills and research skills and to introduce Personality/Career Development programmes for the Divyang students in the University.
- To establish an exclusive Braille Resource Centre for the Visually Challenged students and to organize campus recruitment drives exclusively for the Divyangjan.
- Conduct Access Audit of buildings which are mostly accessed by the Divyang students such as

Central Library, Examination, Administrative & Research buildings located at Jamunipur, Kotwa and Hanumanganj campuses.

8. Cultural and Social Activities:

- Department of performing Art dedicated to the cause of preserving local folk music, dance & musical instruments.
- Open air amphitheater to promote activities/event of music and performing arts
- Focused social outreach initiatives marked by activities including blood donation camp, medical camp, Covid19 awareness drive, distribution of food packets, yoga teaching to the under privileged children, etc. with active support of our student. (JANAMI)
- Arts Gallery & Ganga Museum.
- Provision for ambulance facility for students as well as the local rural population.
- Free of cost Soil Testing facility to farmers.
- Promoting Girl Child Education through Priyadarshini Balika Vidyalaya.
- Divyangjan School for hearing impaired.
- Special diploma and certificate programs including Ganga Rakshak, Ganga Sevak, Jyotish and Karmakand.
- Career Guidance Cell offering free coaching to SC/ST/OBC/EWS/Divyangjan students
- Environment consciousness, promoting clean, green and energy consciousness through usage of LED bulbs, Solar Panels, Water Harvesting, Waste Management, E-waste and Sensor based equipment for curtailing wastage/spillage.

9. Best Practices:

- Gram Pravas: It is a part of NGB Outreach initiative and one of the unique, best practices, which requires Ph.D program scholars to visit villages, interact with the rural population and understand first hand the problems and challenges faced by the villagers in their day to day life and offer possible solutions.
- Special Sign Language program (Talking Hands)
- Yoga
- Educating the deprived and poor children through student support
- Wide range of Committees/Cells for the welfare of students



10. Examination:

- An automated admission and examination system.

11. Alumni:

- A proactive alumni association, dedicated to promotion of sustained sense of belonging to the alma matter, and also to guide the institution as a stakeholder.



1. Placement:

- Dedicated Placement & Training Centre at Hanumanganj campus
- Offering training and placement opportunities to students
- More than 100 students have secured placements in numerous companies of repute, including public sector and government jobs.



Training



Placement



“प्रश्न पूछना और उसका जवाब देना, जानने की चेष्टा करना, एक विद्यार्थी का खास लक्षण है।”

NATIONAL EDUCATION POLICY 2020



NATIONAL EDUCATION POLICY 2020

The Government of India announced the National Education Policy-2020 in July 2020. Covering all levels of education – from school education to higher education, including professional and adult education – the policy rests on the principles of affordability, accessibility, quality, equity, accountability, employability.

A substantial part of the policy document is devoted to higher education, with emphasis on multidisciplinary approach, faculty and institutional autonomy, governance reforms, enhancing access through credit mobility, open and digital learning environment, and skills development. A few of the features mentioned in NEP-2020, which are unique in the Indian context are already being practiced in conventional higher education system. The students can experience the holistic features of learning through following the proper orientation mechanisms:

ORGANIZATIONAL SERVICES FOR HOLISTIC LEARNING:

In this regard, academic programs need to be strengthened with tailor-made pedagogical practices aligned to the mode of learning, leading towards quality education. In this regard, scope shall be given for assessment through creative evaluation techniques at different difficulty levels such that a student can take them as a part of learning.

Enhanced academic support such as university wellness through alumni, Industrial collaborations, student services, etc. Such facilitation may help the students to access and transit from various educational levels. Synchronize their curricular and co-curricular activities at various levels to enhance their skill, which is an essential task in contemporary education.

Bridging the Socio-economic barriers: "Education for everyone" can be realized through enhancing the existing socio-economical supports like Scholarship portals, Women empowerment, establishing friendly infrastructure for the Divyang students. Such facilities need to be offered at all the stages of learning process, with transparency to realize their deserving profile and self-confidence.

INTEGRATION OF TECHNOLOGY AND HERITAGE:

The technology-enabled pedagogic approach for learning at different institutes is a vital component. To strengthen the students' aptitude, it is essential to recognize the value of vast cultural heritage of India. Further, the learning outcome can be enhanced through accessing the multi-lingual learning resources through technology-enabled platforms. These aspects make both the institute and the students to inculcate an approach for various locally challenging issues that need technological intervention.

In summary, a student will get adapted to a curriculum that encourages the development of research and thus will develop a personality that values science, technology, innovation, society and heritage. To achieve these objectives, NEP-2020 brings out the optimal solution for such issues, which can be presented in terms of 6 Ms (Multi Lingual, Multi Entry, Multi Exit,



Multi Disciplinary, Multi Institute and Multi Mode).

For effective implementation of NEP-2020, the curriculum needs to be redesigned and aligned with requirements of the industry. Therefore, the students need to be re-oriented towards outcome-based learning using different learning modules. The learning modules will help them to attain holistic development, which is the "the primary objective of NEP-2020".

Taking the NEP-2020 as an opportunity to undertake a comprehensive review of our existing academic programmes and find ways to incorporate new ideas from the policy, Vice-Chancellor, NGB(DU) appointed a 24 -member committee to suggest steps for a phased approach to implementation of NEP-2020 from the Academic Year 2023-2024 onwards. The terms of reference of the Committee shall be as under:

To formulate detailed modalities for phase-wise implementation of NEP-2020.

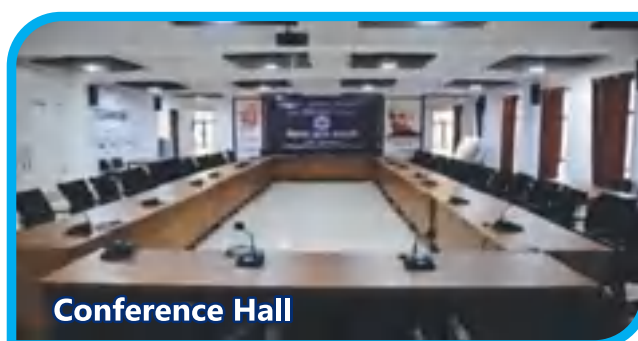
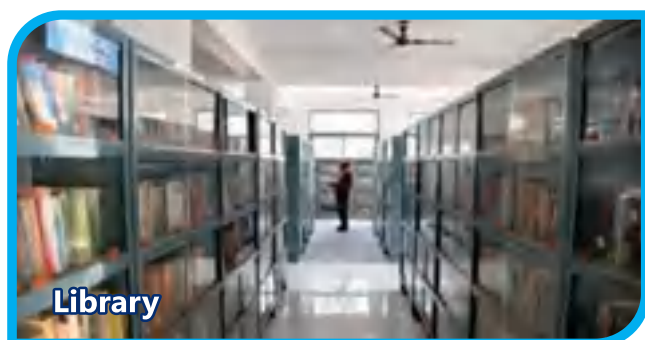
To coordinate and liaise with the academic units in chalking out programmes and structures as per NEP-2020.

To work with the IQAC to rationalize existing programmes/courses and introduce programmes/courses in accordance with NEP-2020 and work out regulations of transition from pre to post NEP-2020.

To submit (a) a roadmap for phase-wise implementation of NEP-2020. **(b)** new programmes/courses and structures under NEP-2020.



Facilities





Facilities



NCC



NSS



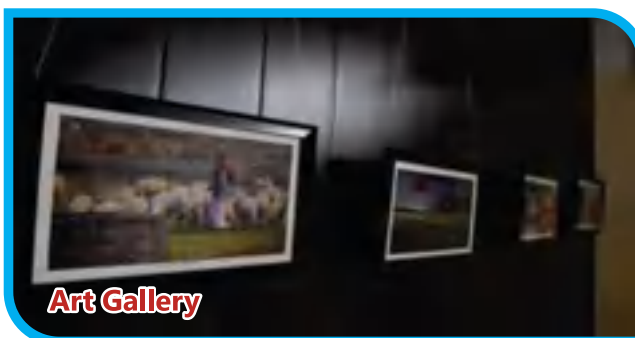
Rovers & Rangers



Green House



Canteen & Cafeteria



Art Gallery



Media Centre



Health Centre



Ambulance



Transport

GLIMPSES



**Shashi Memorial Excellence Award
for Meritorious Student 2022-23**



G.D. Memorial Award for Excellence 2022-23



Manish Pandey Memorial Award 2022-23



**Janami Foundation Award for
Underprivileged/ Deprived Kids**



Alumni Meet 2022-23



ICSSR Sponsored National Seminar



Celebration 75 Years of Independence



Parents-Teacher Meet



Legal Awareness Visit



Folk Dance Program by Group

SPORTS ACTIVITY



YOUTH FESTIVAL "UDAAN" 2022-23

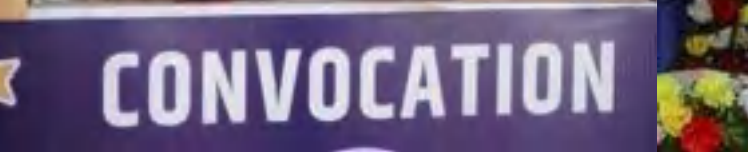


MEDIA COVERAGE



"ज्ञान एक ऐसा निवेश है जिसका मुनाफा हमारे जीवन के अंत तक मिलता रहता है।"

Convocation-2023



Convocation-2023





ACADEMIC PROGRAMS

2023-24

Faculty of Business Management & Computer Application

Academic Programs	Code	Eligibility	Fee Per Semester	Duration	Intake	Processing Fee
BBA	302	10+2 Pass from any recognized Board	₹16550	6 Sem.	60	1000
BCA	301	10+2 Pass from any recognized Board	₹16550	6 Sem.	60	1000
MBA	402	Graduation	₹31550	4 Sem.	60	1000
MCA	405	Graduation with Mathematics or BCA	₹26550	4 Sem.	60	1000
PGDCA	406	Graduation	₹10550	2 Sem.	30	1000

Faculty of Education

Academic Programs	Code	Eligibility	Fee Per Semester	Duration	Intake	Processing Fee
B.Ed.	304	Gen & OBC-UG/PG with 50% marks in any discipline or B.E./B.Tech./ M.C.A. with 55% marks with specialization in Science and Mathematics SC/ST-Only UG/PG	₹37550	4 Sem.	200	1000
B.Ed.Spl.Ed. (HI)	305	UG/PG with 50% marks in any discipline or B.E./B.Tech. with specialization in Science & Mathematics 55% marks SC/ST & Divyangjan 45%	₹37550	4 Sem.	30	1000
B.Ed.Spl.Ed. (ID) Approval from RCI awaited	305.1	UG/PG with 50% marks in any discipline or B.E./B.Tech. with specialization in Science & Mathematics 55% marks SC/ST & Divyangjan 45%	₹37550	4 Sem.	30	1000
B.El.Ed.	310	10+2 pass from any Recognized Board	₹25550	8 Sem.	50	1000
D.Ed.Spl.Ed.(HI)	309	10+2 pass from any Recognized Board	₹20550	4 Sem.	35	1000
D.Ed.Spl.Ed.(ID)	309.1	10+2 pass from any Recognized Board	₹20550	4 Sem.	35	1000
M.Ed	403	B.Ed./B.El.Ed. with 50%	₹31550	4 Sem.	50	1000
M.Ed.Spl.Ed.(HI)	404	B.Ed.Spl.Ed.(Hi)/ B.Ed. Gen. Course D.Ed.Spl.Ed.(Hi) with 50%	₹35550	4 Sem.	15	1000

“विचारों को पढ़कर बदलाव नहीं आता है, विचारों पर चलकर बदलाव आता है।”



Faculty of Science

Academic Programs	Code	Eligibility	Fee Per Sem.	Duration	Intake	Processing Fee
M.Sc. (Physics)	213	B.Sc. with Physics	₹10850	4 Sem.	30	500
M.Sc. (Chemistry)	214	B.Sc. with Chemistry	₹10850	4 Sem.	30	500
M.Sc. (Maths)	215	B.Sc. with Maths	₹10850	4 Sem.	30	500
M.Sc. (Botany)	216	B.Sc. with Botany	₹10850	4 Sem.	30	500
M.Sc. (Zoology)	217	B.Sc. with Zoology	₹10850	4 Sem.	30	500
Post Graduate Diploma in Environmental Assessment	502	B.Sc. Bio Group	₹5350	2 Sem.	15	500
Post Graduate Diploma in Aquaculture Tech. & Management	503	B.Sc.	₹5350	2 Sem.	15	500
Diploma in Ganga Rakshak	504	10+2 Pass from any Recognized Board.	₹1350	2 Sem.	60	500
Certificate Course in Ganga Rakshak	507	10+2 Pass from any Recognized Board.	₹350	2 Sem.	60	500

B.Sc. (Hons.)/B.Sc.(Hons. with Research) As Per NEP-2020

(With Multiple Entry & Exit Options) Applicable from Academic Year: 2023-24

Academic Programs	Code	Eligibility	Duration	Intake
B.Sc. (Hons.)/ (Hons. with Research) in Maths	23102.1	10+2/Intermediate with Maths or Bio Group	8 Sem.	60
B.Sc. (Hons.)/ (Hons. with Research) in Physics	23102.4	10+2/Intermediate with Maths or Bio Group	8 Sem.	60
B.Sc. (Hons.)/ (Hons. with Research) in Chemistry	23102.5	10+2/Intermediate with Maths or Bio Group	8 Sem.	60
B.Sc. (Hons.)/ (Hons. with Research) in Botany	23103.1	10+2/Intermediate with Maths or Bio Group	8 Sem.	60
B.Sc. (Hons.)/ (Hons. with Research) in Zoology	23103.2	10+2/Intermediate with Maths or Bio Group	8 Sem.	60

B.Sc. (H./HR.)	1 Year	2 Year	3 Year	4 Year
Tuition Fees	₹8000	₹8000	₹12000	₹15000 (Hons.) ₹20000 (Hons.+Research)
lab Charges	₹2000	₹2000	₹3000	₹4000
Examination Fee	₹2000	₹2000	₹2000	₹2000
Total	₹12000	₹12000	₹17000	₹21000 (Hons.) ₹26000 (Hons.+Research)
Semester wise Fee Submission (July & January)	Sem. 1 - ₹6000 Sem. 2 - ₹6000	Sem. 3 - ₹6000 Sem. 4 - ₹6000	Sem. 5 - ₹8500 Sem. 6 - ₹8500	Sem. 7 - ₹10500 (Hons.) Sem. 8 - ₹10500 (Hons.) Sem. 7 - ₹13000 (Hons.+Res.) Sem. 8 - ₹13000 (Hons.+Res.)



Faculty of Law

Academic Programs	Code	Eligibility	Fee Per Sem	Duration	Intake	Processing Fee
BA-LLB (Integrated)	306	10+2 Pass from any Recognized Board Gen 45%, OBC 42% SC/ST 40%	₹13050	10 Sem.	120	1000
LL.B. (3 years)	307	UG/PG with Gen 45%, OBC 42%, SC/ST 40%	₹11050	6 Sem.	180	1000
LL.M.	309	LL.B., B.A.LL.B. with Gen 45%, OBC 42%, SC/ST 40%	₹31550	4 Sem.	60	1000
Diploma in Good & Service Tax	509	10+2 Pass from any Recognized Board	₹7850	6 Months	60	500
Diploma in Human Rights	510	10+2 Pass from any Recognized Board	₹7850	6 Months	60	500

Faculty of Commerce

Academic Programs	Code	Eligibility	Fee Per Sem	Duration	Intake	Processing Fee
M.Com.	212	Graduation	₹5850	4 Sem.	60	500
DFA	507	10+2 Pass from any Recognized Board	₹5000	6 months	30	500
Tally	511	10+2 Pass from any Recognized Board	₹2500	3 months	30	500

B.Com. (Hons.)/B.Com. (Hons. with Research) As Per NEP-2020 (With Multiple Entry & Exit Options) Applicable from Academic Year: 2023-24

Academic Programs	Code	Eligibility	Duration	Intake
B.Com. (Hons.)/ (Hons. with Research)	23 104	10+2/Intermediate	8 Sem.	120
B.Com. (H./HR.)	1 Year	2 Year	3 Year	4 Year
Tuition Fees	₹8000	₹8000	₹12000	₹15000 (Hons.) ₹20000 (Hons.+Research)
lab Charges	₹2000	₹2000	₹3000	₹4000
Examination Fee	₹2000	₹2000	₹2000	₹2000
Total	₹12000	₹12000	₹17000	₹21000 (Hons.) ₹26000 (Hons.+Research)
Semester wise Fee Submission (July & January)	Sem. 1 - ₹6000 Sem. 2 - ₹6000	Sem. 3 - ₹6000 Sem. 4 - ₹6000	Sem. 5 - ₹8500 Sem. 6 - ₹8500	Sem. 7 - ₹10500 (Hons.) Sem. 8 - ₹10500 (Hons.) Sem. 7 - ₹13000 (Hons.+Res.) Sem. 8 - ₹13000 (Hons.+Res.)



Faculty of Arts

Academic Programs	Code	Eligibility	Fee Per Sem	Duration	Intake	Processing Fee
B.Lib.I.Sc.	106	Graduation	₹6050	2 Sem.	60	1000
M.A. (Ancient History)	201	Graduation	₹4850	4 Sem.	60	500
M.A. (Education)	202	Graduation	₹4850	4 Sem.	60	500
M.A. (English)	203	Graduation	₹4850	4 Sem.	60	500
M.A. (Hindi)	204	Graduation	₹4850	4 Sem.	60	500
M.A. (Home Science)	205	Graduation	₹4850	4 Sem.	60	500
M.A. (Philosophy)	206	Graduation	₹4850	4 Sem.	20	500
M.A. (Political Science)	207	Graduation	₹4850	4 Sem.	60	500
M.A. (Sanskrit)	208	Graduation	₹4850	4 Sem.	60	500
M.A. (Sociology)	209	Graduation	₹4850	4 Sem.	60	500
M.A. (Geography)	210	B.A. with one subject in Geography B.Sc./B.Tech	₹5850	4 Sem.	30	500
M.A. (Economics)	211	Graduation	₹4850	4 Sem.	30	500
M.A. (Journalism & Mass Communication)	407	Graduation / B.A.J.M.C.	₹6850	4 Sem.	60	500
P.G.D.J.M.C.	408	Graduation	₹5850	2 Sem.	20	500
M.P.A. (Vocal)	219	B.P.A. (Vocal) or Graduation with Prabhakar	₹6850	4 Sem.	20	500
M.P.A. (Tabla)	220	B.P.A. (Tabla) or Graduation with Prabhakar	₹6850	4 Sem.	10	500
M.Lib.I.Sc.	218	B.Lib.I.Sc.	₹9050	2 Sem.	30	1000
M.S.W.	401	Graduation	₹11050	4 Sem.	30	1000
PG Diploma in Yoga	501	Graduation	₹5850	2 Sem.	60	500
Jyotish Karmakand & Vastu Shashtra	505	Graduation	₹10350	1 Year	160	500
B.P.A. (Music)	105	Intermediate with Music as one of the subject or intermediate with certificate in Music from institutions recognized for Music teaching	₹3850	6 Sem.	60	500

“जो पढ़ाई आज आपको दर्द लग रही है, अगर इस दर्द को झेलते रहेंगे तो कल ये दर्द आपकी सबसे बड़ी ताकत बन जाएगी।”



B.A. (Hons.)/B.A. (Hons. with Research) As Per NEP-2020
(With Multiple Entry & Exit Options) Applicable from Academic Year: 2023-24

Academic Programs	Code	Eligibility	Duration	Intake
B.A. (Hons.)/ (Hons. with Research) in Ancient History	23101.1	10+2/Intermediate	8 Sem.	60
B.A. (Hons.)/ (Hons. with Research) in Economics	23101.2	10+2/Intermediate	8 Sem.	60
B.A. (Hons.)/ (Hons. with Research) in Philosophy	23101.3	10+2/Intermediate	8 Sem.	60
B.A. (Hons.)/ (Hons. with Research) in Geography	23101.4	10+2/Intermediate	8 Sem.	60
B.A. (Hons.)/ (Hons. with Research) in Home Science	23101.5	10+2/Intermediate	8 Sem.	60
B.A. (Hons.)/ (Hons. with Research) in Sociology	23101.6	10+2/Intermediate	8 Sem.	60
B.A. (Hons.)/ (Hons. with Research) in Political Science	23101.7	10+2/Intermediate	8 Sem.	60
B.A. (Hons.)/ (Hons. with Research) in Music	23101.8	10+2/Intermediate	8 Sem.	60
B.A. (Hons.)/ (Hons. with Research) in Education	23101.9	10+2/Intermediate	8 Sem.	60
B.A. (Hons.)/ (Hons. with Research) in Sanskrit	23101.10	10+2/Intermediate	8 Sem.	60
B.A. (Hons.)/ (Hons. with Research) in English	23101.11	10+2/Intermediate	8 Sem.	60
B.A. (Hons.)/ (Hons. with Research) in Hindi	23101.12	10+2/Intermediate	8 Sem.	60
B.A. (Hons.)/ (Hons. with Research) in Journalism & Mass Communication	23308	10+2/Intermediate	8 Sem.	60

B.A. (Hons.)	1 Year	2 Year	3 Year	4 Year
Tuition Fees	₹8000	₹8000	₹12000	₹15000 (Hons.) ₹20000 (Hons.+Research)
Examination Fee	₹2000	₹2000	₹2000	₹2000
Total	₹10000	₹10000	₹14000	₹17000 (Hons.) ₹22000 (Hons.+Research)
Semester wise Fee Submission (July & January)	Sem. 1 - ₹5000 Sem. 2 - ₹5000	Sem. 3 - ₹5000 Sem. 4 - ₹5000	Sem. 5 - ₹7000 Sem. 6 - ₹7000	Sem. 7 - ₹8500 (Hons.) Sem. 8 - ₹8500 (Hons.) Sem. 7 - ₹11500 (Hons.+Res.) Sem. 8 - ₹11500 (Hons.+Res.)
Lab Charges* (Applicable for Geography & Home Science Streams)	₹2000	₹2000	₹3000	₹4000



B.A. (Hons.) in JMC / B.A. (Hons.+Research) in JMC

B.A. JMC (Hons.)	1 Year	2 Year	3 Year	4 Year
Tuition Fees	₹10000	₹10000	₹14000	₹18000 (Hons.) ₹22000 (Hons.+Research)
Lab Charges	₹1000	₹1000	₹1000	₹1000
Examination Fee	₹2000	₹2000	₹2000	₹2000
Total	₹13000	₹13000	₹17000	₹21000 (Hons.) ₹25000 (Hons.+Research)
Semester wise Fee Submission (July & January)	Sem. 1 - ₹6500 Sem. 2 - ₹6500	Sem. 3 - ₹6500 Sem. 4 - ₹6500	Sem. 5 - ₹8500 Sem. 6 - ₹8500	Sem. 7 - ₹10500 (Hons.) Sem. 8 - ₹10500 (Hons.) Sem. 7 - ₹12500 (Hons.+Res.) Sem. 8 - ₹12500 (Hons.+Res.)

INSTRUCTIONS FOR FILLING THE APPLICATION FORM

- Darken the circle in front of the column which is applicable
- Write the name in CAPITAL LETTER. Fill one letters in each box and leave a space between the first name, middle name and last name.
- Do not write Mr./Km./Mrs./first.
- Fill the name, parents name and date of birth on the basis of high school certificate.

Doctoral Programme (Ph.D.)

- Admission to Ph.D. Program through CRET. Notification with available vacancy in each subject given separately.
- Fees 60000 PA submission fees applicable at the time of submission.



आवेदन पत्र भरने हेतु अनुदेश

INSTRUCTIONS FOR FILLING THE APPLICATION FORM

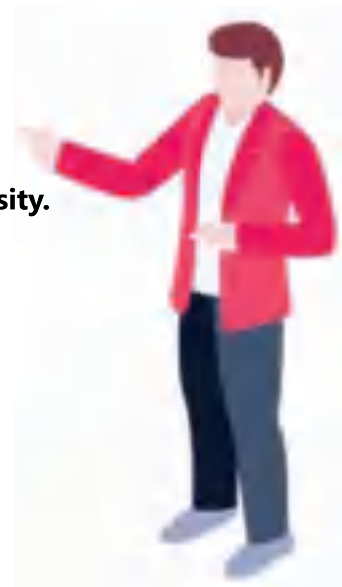
1. Darken the circle in front of the column which is applicable.
जो स्तम्भ लागू हो उसके सामने गोले को काला करे।
2. Write the name in capital letters. Fill one letter in each box and leave a space between the first name, middle name and last name.
नाम को अंग्रेजी के बड़े अक्षरों से भरे। प्रत्येक खानों में एक अक्षर भरे तथा प्रथम नाम मध्य नाम व सर नाम के बीच एक खाना छोड़ दें।
3. Do not write Mr./Km./Mrs.
नाम के पहले श्री/कुमारी/श्रीमती न लिखे।
4. Fill the name, parents name and date of birth on the basis of high school certificate.
हाईस्कूल प्रमाणपत्र के आधार पर नाम, माता/पिता का नाम एवं जन्म तिथि भरे।

Program : B.Com. Semester - 1

- Paper -1. Advance Accounting.
Paper -2. Contract Law.
Paper-3 (Elective). **Choose any one from A, B or C.**
A. Business Economics.
B. Business Environment.
C. Theory of Management.
Paper-4. Sanskrit/Hindi or English.
Paper-5. **Choose one course from a Pool of SEC of University.**
Pool of SEC/Vocational Courses in NGB(DU)
A. Fundamental of Computer
B. Tourism & Travel Management
C. Jyotish shashtra and Karmakand.
D. Vermiculture
E. Horticulture.
F. Disaster Management
G. Basic Instrumentation Skill
Paper-6. Understanding India.

Program: B.Sc. Maths. Semester - 1

- Paper -1. Differential and Integral calculus.
Paper -2. Mechanics and wave oscillation.
Paper-3. Fundamental of Chemistry.
Paper-4. Sanskrit/Hindi or English.
Paper-5. **Choose one course from a Pool of SEC of University.**
Pool of SEC/Vocational Courses in NGB(DU)
A. Fundamental of Computer
B. Tourism & Travel Management
C. Jyotish shashtra and Karmakand.
D. Vermiculture
E. Horticulture.
F. Disaster Management
G. Basic Instrumentation Skill
Paper-6. Understanding India.



Program: B.Sc. Bio Semester - 1

- Paper -1. Microbial diversity and technology.
Paper -2. Animal Diversity - I.
Paper-3. Fundamental of Chemistry.
Paper-4. Sanskrit/Hindi or English.
Paper-5. **Choose one course from a Pool of SEC of University.**
Pool of SEC/Vocational Courses in NGB(DU)
A. Fundamental of Computer
B. Tourism & Travel Management
C. Jyotish shashtra and Karmakand.
D. Vermiculture
E. Horticulture.
F. Disaster Management
G. Basic Instrumentation Skill
Paper-6. Understanding India.

Program: B.A. Semester - 1

Choose one Subject for BA (Hons)/Hons. with Research & two subject any other

- A. Ancient History - Political History of Ancient India (600 BC to 319 AD).
B. Geography - Physical Geography – Earth System.
C. Sociology -Introduction of Sociology.
D. Political Science - Political Theory.
E. Education (Conceptual framework of education).
F. Sanskrit - संस्कृत व्याकरण एवं पद्य साहित्य
G. English - English Prose and Writing skills.
H. Hindi -हिन्दी साहित्य का इतिहास.
I. Economics -Micro Economics.
J. Philosophy -Indian Philosophy.
K. Home Science - Fundamental of food and nutrition and health care.
L. Music -Introduction to Indian Music.
Paper-4. Sanskrit/Hindi or English.
Paper-5. **Choose one course from a Pool of SEC of University.**
Pool of SEC/Vocational Courses in NGB(DU)
A. Fundamental of Computer
B. Tourism & Travel Management
C. Jyotish shashtra and Karmakand.
D. Vermiculture
E. Horticulture.
F. Disaster Management
G. Basic Instrumentation Skill
Paper-6. Understanding India.



Program: B.A. J.M.C. Semester - 1

- Paper -1. Introduction of communication.
Paper -2. History of Indian Journalism.
Paper – 3. Choose any one course from the following:
A. Evaluation of Media.
B. Evaluation of Audience.
Paper-4. Sanskrit/Hindi or English.
Paper-5. **Choose one course from a Pool of SEC of University.**
Pool of SEC/Vocational Courses in NGB(DU)
A. Fundamental of Computer
B. Tourism & Travel Management
C. Jyotish shashtra and Karmakand.
D. Vermiculture
E. Horticulture.
F. Disaster Management
G. Basic Instrumentation Skill
Paper-6. Understanding India.

ADMISSION POLICY

GENERAL CONDITIONS

1. The Nehru Gram Bharati (Deemed to be University) (NGB(DU)), is open to all persons irrespective of gender caste, creed, religion, race or class, and it shall not be lawful for the Nehru Gram Bharati (Deemed to be University) to adopt or impose on any person, any test whatsoever of religious belief or profession in order to entitle him/her to be admitted as a student in the NGB(DU) or to graduate there at or to enjoy or exercise any privilege
2. The NGB shall maintain a global character and high standards of teaching and research and shall provide merit-based admission in a fair and transparent manner. The merit of a student will be determined through a common national level entrance examination conducted offline/online by the NGB(DU) either individually or jointly with other
3. Admission in the Nehru Gram Bharati shall be open to Indian citizens, Non-Resident Indians, and persons of Indian origin. However, the NGB(DU) shall also admit foreign students as per the Government of India and State Government guidelines. Provided that titles, eligibility criteria and duration of Degree programs shall be strictly as per the specifications of degrees prescribed in UGC Regulations. Provided further that lateral entry shall be allowed only as per the provisions of regulations of regulatory bodies, as may be applicable to a program. Provided further that equivalence for entry level eligibility shall be decided as per Association of Indian Universities (AIU) for foreign students. Provided further that no students passing eligibility examination from unrecognized Board or unrecognized University/Deemed to be University shall be allowed admission or grant of degree by the Deemed to be University.



“ शिक्षा का उद्देश्य तथ्यों को सीखना नहीं होता है बल्कि शिक्षा का मुख्य दिमाग को प्रशिक्षित करना होता है। ”



4. For NRI/Foreign students, admission shall be made on merit of marks obtained in the qualifying examinations as per provisions of regulatory bodies, as may be applicable.
5. There shall be a well established Admission Cell headed by The Director, Admissions to conduct new/fresh admissions for every academic session as per the admission policy of NGB(DU), Prayagraj.
6. The Director, Admissions shall initiate all admission procedure in coordination with The Registrar and other related functionaries of NGB(DU).
7. All the Admissions related documents viz admission forms, transfer certificates, migration certificates, compiled data of admissions etc. shall be preserved in the Admission Cell and maintained as per the University norms. The Admission Cell shall provide the information to other related departments as and when required in the form requested.
8. The enrollment number for a student shall be generated automatically on the system while filling/submitted Admission Form after depositing the Admission Fee.
9. Where admissions are to be given by an agency determined by State or Central Government, the Deemed to be University shall follow the norms and procedure prescribed for such admission.
10. The NGB(DU) where necessary, may also consider score/merit in Entrance Tests conducted by any other State level/ National level agency appointed by the relevant government for admission.

ADMISSION NORMS

1. The admission and enrollment in various programs/programs of the various Department/Faculties of Nehru Gram Bharati (Deemed to be University) including reservation of seats shall be in accordance with the procedure and policy laid down in the Ordinances of the Nehru Gram Bharati (Deemed to be University), policies of Government of India, State Government, and UGC norms as applicable to unaided deemed to be universities.
2. Admissions to various programs of the NGB (DU) shall be made strictly on the basis of CUET/ NGB (DU) Entrance Test/Interview and Counseling.
3. Merit for admission to various programs of the NGB (DU) may be determined either on the basis of marks or grade obtained in the CUET/ other applicable entrance/qualifying examinations along with applicable considerations as approved by competent authorities/ regulatory/ statutory bodies and NGB (DU) Ordinance, achievements in co- curricular and extra- curricular activities or on the basis of marks or grade obtained in the entrance test conducted offline/online at the National level either by NGB (DU) or an association of the Universities offering similar programs, or any agency assigned such responsibility. However, admission in professional and technical programs shall be made through entrance test only.
4. The number of seats including enhancement or alternation thereof in different programs of various Departments/Faculties of the NGB (DU) shall be fixed by the Board of Management on the recommendation of the Academic Council.
5. The NGB (DU) will adhere to the criteria of reservation in admission as per the policy of the Government of India, State Government, UGC guideline related to unaided deemed to be universities.



Number of seats in the Nehru Gram Bharati (Deemed to be University): -

The Board of Management on the recommendation of the Academic Council has fixed the number of seats in various programs of the NGB(DU) at the beginning of each academic session in accordance with availability of teachers and infrastructure and as per permission received from regulatory bodies. It may be revised, if required, with due approval as mentioned above.

Alteration of seats in different programs:

The Academic Council may propose the alternation of seats in different programs to the Board of Management through the Vice Chancellor.

1. The Vice-Chancellor shall recommend the alternation of seats to the Board of Management stating reasons for such alternation.
2. The Board of Management may approve the alternation as proposed by the Academic Council and recommended by the Vice-Chancellor.
3. Provided that such alternation shall not be made for those programs for which specific number of seats is permitted by regulatory bodies.

Reservation of seats (Reservation Criteria for Admission): -

Reservation in admission to Nehru Gram Bharati (Deemed to be University) is based on the policy guidelines of the Government of India, State Government, and UGC norms for unaided Deemed to be Universities.

Admission Procedure for Academic Programs on the basis of Merit & Direct Interview:

Manual/Online Application Form: An Online application form can be applied for all such academic programs through our website www.ngbv.ac.in or Manual Application Form is available at NGB(DU) Admission Cell office located at Administrative Office at 104F/3, Malviya Road, George Town, Prayagraj 211002 or from Main Campus Kotwa-Jamunipur-Dubawal, Prayagraj 221505 and Hanumanganj Campus 221505.

REFUND POLICY

As Per UGC Fee Refund Policy 2023-24

NOTE : ADMISSION OPEN FOR SESSION 2023-24



OFFICER'S TO CONTACT

S.No.	Name	Designation	Contact no.
1	Mr. J. N. Misra	Hon'ble Chancellor	9415236900
2	Prof. Sanjay Kumar Srivastava	Vice Chancellor	9415182100
3	Dr. S. C. Tiwari	Pro-Vice Chancellor	9935693803
4	Mr. R. L. Vishwakarma	Registrar	9450118512
5	Dr. Rajesh Tiwari	Controller of Examination	9450086198
6	Dr. Himanshu Tandon	Joint Registrar	7376208151
7	Mr. Anupam Sinha	Deputy Registrar (Finance)	9935143452
8	Mr. Abhay Anand Sinha	Deputy Registrar (Examination)	8400321321
9	Mr. Anurag Tripathi	Assistant Registrar (Admin)	9307351001
10	Mr. Achyut Kumar Yadav	Assistant Registrar (Examination)	7388424118
11	Dr. Asheesh Shivam	Dean (Faculty of Science)	7007912932
12	Prof. Vinod Kumar Pandey	Dean (Faculty of Commerce) & Chairman of Admission (Sub) Committee	9839103741
13	Dr. Swapnil Tripathi	Dean (Faculty of Law)	8004018779
14	Dr. Savya Sacchi	Dean as Incharge (Faculty of Education)	7985289271
15	Prof. Rohit Ramesh	Dean (Faculty of Management)	7355068790
16	Dr. Savya Sacchi	Dean (Faculty of Arts)	8736861020
17	Prof. R. C. Tripathi	Professor Incharge (Research & Development)	9810732527, 9793394222
18	Dr. Chhaya Malviya	Dean (Students Welfare)	7393874210
19	Dr. Dev Narayan Pathak	Chief Proctor	7607974120
20	Dr. Rudra Prakash Ojha	Director (Research Centre)	7499061356
21	Dr. R.C Mishra	Director (Jamunipur Campus)	8318691756
22	Mr. S. S. Mishra	Director IQAC & Special Education	9631761911
23	Dr. Munvar Bin Shaik	IQAC Coordinator	8737045602
24	Mr. Arvind Kumar Shukla	Nodal Officer (Scholarship)	9452562462
25	Dr. K.S. Yadav	ANO (NCC)	9208613061
26	Dr. Alok Mishra	Coordinator (NSS)	9984165089
27	Mr. Ajay Kumar	Physical Instructor (Sports)	9807311299
28	Dr. Alok Tripathi	Faculty In-charge Library	9415601124
29	Mr. Sudhanshu Dwivedi	Asst. Librarian (Central Library)	9839905631
30	Mrs. Priya Mishra	Alumni In-charge	9721352187
31	Mrs. Shivani Srivastava	Placement Officer	8004396934
32	Mrs. Manorama Singh	Coordinator, Admission Cell	9918025444
33	Mrs. Pratima Mishra	Warden (Girls Hostel)	8874305790
34	Dr. Vishnu Prasad Shukla	Co-ordinator Rovers/Ranger	8707267022
35	Mr. Deepak Singh	Asst. Registrat (Finance)	8737978557
36	Mr. Akhilesh Singh	Asst. Registrat (Academic)	9565754664



Code of Conduct for Students

छात्रों के लिये आचार संहिता

- छात्र विश्वविद्यालय द्वारा तैयार किए गए व्यवहार व आचरण के नियमों के अधीन हैं।
- विश्वविद्यालय में अनुशासन और अच्छे आचरण को बनाए रखने पर जोर दिया जाता है तथा छात्रों को इसका पालन करना चाहिए।
- छात्र समय पर विश्वविद्यालय पहुँचे।
- छात्रों का अपने परिचय पत्र के साथ ही विश्वविद्यालय में प्रवेश करना अनिवार्य है।
- छात्रों को कक्षा के साथ-साथ विश्वविद्यालय परिसर के अंदर भी पूर्ण अनुशासन बनाए रखना चाहिए।
- छात्रों को कक्षाओं में समय का पाबंद होना चाहिए तथा अपना कार्य पूर्ण निष्ठा से करना।
- छात्रों को नोटिस बोर्ड पर लगाई अधिसूचनाओं से समय से परिचित होना चाहिए।
- छात्रों को कक्षा की अवधि में कक्षा के बाहर या विश्वविद्यालय के बाहर घूमने की अनुमति नहीं है।
- छात्रों को कक्षा की अवधि में कक्षा के दौरान विभागाध्यक्ष या अधिष्ठाता के कार्यालय में जाने की अनुमति नहीं है।
- छात्र कक्षा और विश्वविद्यालय परिसर को बिल्कुल साफ-सुथरा रखे। विश्वविद्यालय की दीवारों, बसों, दरवाजों और फर्नीचर को तोड़ना और उन पर लिखना अनुशासन का उल्लंघन है और इसके लिए कड़ी सजा दी जाएगी।
- छात्रों को कचरा और किसी भी अवांछित सामग्री को फेंकने के लिए कूड़ेदान का उपयोग करना चाहिए।
- छात्रों को विश्वविद्यालय के अधिकारियों से पूर्व अनुमति के बिना विश्वविद्यालय परिसर में मनोरंजन करने की अनुमति नहीं है।
- छात्रों को नशे की हालत में व ऐसी सामग्री के साथ विश्वविद्यालय में प्रवेश करने की अनुमति नहीं है।
- छात्रों को कक्षाओं के अंदर मोबाइल के उपयोग की अनुमति नहीं है।
- यदि किसी छात्र का व्यवहार गलत होता है तो संबंधित छात्र के माता-पिता को विश्वविद्यालय में उपस्थित होना होगा तथा विश्वविद्यालय में विभागाध्यक्ष और कुलानुशासक से मिलना होगा।
- किसी भी प्रकार की रैगिंग विश्वविद्यालय में पूर्णतया: प्रतिबंधित है।
- छात्र पूरी तरह से राज्य और केंद्र सरकार द्वारा माननीय सर्वोच्च न्यायालय के संबंध में, रैगिंग की रोकथाम, तंबाकू और मादक उत्पादों के उपयोग पर, हथियारों को रखने और उपयोग पर, किसी भी प्रकार की दवाओं को रखना व उपयोग और अन्य अनुशासन संबंधी मामले में दिखाए गए विभिन्न नियमों और कानूनों का पालन करेंगे।





Notification

With approval of the Competent Authority dated 14.03.2023, the NGB(DU) notifies its Policy on Freeship & Financial Assistance for its students as under. This Policy will be in effect from the date of notification and would apply to the whole of the University.

A. Determination of eligibility norms for Free-ship and Fee Rebates for all students (incl. Sports category):

Coverage:

- No. of Seats to be considered is 02% to the total number of seats (separately for UG and PG) for each categories. Only applicable on Tuition Fee.
- This policy would be applicable for only the 'general Courses'; it will not apply to Professional Courses & the PhD Programme.

Any student beneficiary, if found eligible, would only be entitled to anyone of the two- Freeship OR Fee Rebate/Financial assistance (to be read with Clause B of this document)

(a) Type of Freeship - Merit cum Means

- 75% marks in qualifying examinations.
- Should belong to the rural areas (as notified) plus Antyodaya Card holder.
- 100% of the tuition fees waiver

Note: Subject to Review for continuation.

(b) Cases of Wards (of employees)

- Existing employee (with a regular appointment, NOT applicable for Ad Hoc/Temporary /Job Work employees)
- Applicable to only son/daughter, NOT any other relatives.
- In case the employee has passed away while being in regular employment, with under age wards, such wards would be considered eligible under this category.
- Freeship of 50% will be admissible.

(c) Siblings:

- 02 Siblings studying in NGB(DU) at any given point (in general courses only) would be eligible for 50% freeship for the second/or latter of the two siblings.
- In case 03 siblings are studying in the University they would be eligible for a 100% freeship of 01 student (the third/last of the siblings) as mentioned above.

(d) Sports:

- All Sports cases will be dealt by a notified Sports Selection Board (SSB)* of the University, with the quorum decision, compulsorily with the endorsement of an external sports person of repute.

For Team events: Evidence of being part of the 1st and/or 2 nd position holder final playing team is essential.

For individual events: Appropriate Evidence required.



Any event sanctioned/supported by IOC/National Federations / State Federations / Associations / Para Games Committee/ AIU/Khelo India/ etc. would be considered for the following:

- (i) International participation – 100% freeship
- (ii) National level Medal/Certificate – Gold/ Silver/Bronze and /or 1st /2nd and 3rd place only – 100% Freeship
- (iii) State level Medal/ Certificate - Gold/ Silver and/or 1st /2nd only – 100% Freeship

Note: In case a candidate is in a Professional Course/PhD Programme then they may make a represent their case to the Competent Authority for consideration.

- The List of Team/ Individual events for consideration would be determined by the SSB as above.
- (e) **Divyangjan:** 50% Freeship for candidates with 40% and above disability /blindness/hearing impaired – as certified by the CMO.
- (f) **Any other categories**
 - (i) Wards of Ex-Servicemen : 50% Freeship with the following conditions only.
 - 75% marks in qualifying examinations.
 - Should belong to the rural areas (as notified).
 - (ii) Members of any special Community residing in the 50 Km radius of the University: 50 % freeship – Evidenced by the certificate from the DM.
 - (iii) Wards of Alumni – 50% Freeship
 - (iv) Candidates having lost both parents during Covid 19 Pandemic – 50% Freeship (on certification from the DM)
 - (v) Third Gender – 50% Freeship – evidence with a certificate from Competent Authority.
 - (vi) Candidates from the North East of India, & UTs: 50 % Freeship.

B. Fee rebate/financial assistance of any kind would be admissible only on the following conditions:

- Can only be granted by the Chancellor, Vice Chancellor, ProVice Chancellor and/or on the recommendations of the Board of Management, only on special cases.
- Would be at the discretion of the Competent Authority (as given above) for the betterment of the society at large.
- Would be applicable only once, on sanction.
- No. of Seats to be considered in 01% total number of seats (separately for UG and PG) for each categories. Plus only to be applicable on Tuition Fee.

C. Procedure for the same.

- All the above cases would be routed through the Office of the Dean (Student Welfare) to the Competent Authority.

विश्वविद्यालय - गीत

हे ज्ञान-गंगा स्थली सुहानी, तुम्हारी जय हो, तुम्हारी जय हो।
तेरी शरण में हैं हम अमानी, तुम्हारी जय हो, तुम्हारी जय हो ॥1॥

तू पूज्य बापू की कल्पना है, तू मिश्र जे.एन. की अल्पना है।
तू नेक नेहरू की है निशानी, तुम्हारी जय हो, तुम्हारी जय हो ॥2॥

जो मूक उनकी जुबान है तू, जो ना सुने उसके कान है तू।
तू ही कहे अनकही कहानी, तुम्हारी जय हो, तुम्हारी जय हो ॥3॥

कि गंगा-जमुना की धार है तू, कि माँ सरस्वती का प्यार है तू।
कि तू त्रिवेणी के तट का पानी, तुम्हारी जय हो, तुम्हारी जय हो ॥4॥

ये वेणी माधव ये आदि माधव, अनन्त माधव अनादि माधव।
ये ब्रह्मा के यज्ञ की निशानी, तुम्हारी जय हो, तुम्हारी जय हो ॥5॥

यहीं अक्षयवट के पत्र-पल्लव, कि जिस पै खेले मुकुन्द माधव।
महा प्रलय की यही कहानी, तुम्हारी जय हो, तुम्हारी जय हो ॥6॥

कि वारणावत् कि तू कथा है, कि पाँच पाण्डव की तू व्यथा है।
कि मातु कुन्ती की तू कहानी, तुम्हारी जय हो, तुम्हारी जय हो ॥7॥

मिले कुमारिल से आदि शंकर, ये मातु ऐन्द्री ये जैन ऋषिवर।
महर्षि दुर्वासा आत्म ज्ञानी, तुम्हारी जय हो, तुम्हारी जय हो ॥8॥

यहीं भारद्वाज ऋषि का आश्रम, जो सर्वविद्या का दे पराक्रम।
यहीं से निकलेंगे ब्रह्मज्ञानी, तुम्हारी जय हो, तुम्हारी जय हो ॥9॥

ये गाँव के झोपड़ों की ललना, जो चल पड़ी छोड़ करके अँगना।
ये गार्गी-मैत्रेयी सयानी, तुम्हारी जय हो, तुम्हारी जय हो ॥10॥

Contact : 9670449214, 9721352187, 9839103741, 9918025444

**JAMUNIPUR
CAMPUS:**

Kotwa -Jamunipur - Dubawal, Prayagraj 221505

**RESEARCH
CENTER:**

Shashi Parisar, Jhoothitali, Prayagraj 221505

**HANUMANGANJ
CAMPUS:**

G.T. Road, Hanumanganj, Prayagraj 221505

**SOCIETY
OFFICE:**

104 F/3, Malviya Road, George Town, Prayagraj 211002

🌐 www.ngbv.ac.in | ✉ info@ngbu.edu.in

Follow us:  <https://www.facebook.com/Nehrugrambharatiofficial/>
 [@officialngbu](https://www.instagram.com/officialngbu)



NEHRU GRAM BHARATI
(Deemed to be University)

₹ 1000/-